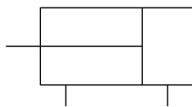




C(D)Q2, Compact Cylinder, Double Acting, Single Rod w/Auto Switch Mounting Groove CDQ2A32-75DMZ

Data Sheet

Following a review of our popular CQ2 compact cylinder Series our R&D engineers have totally redesigned the complete cylinder range to bring you even more performance benefits and increased cylinder options. The major difference between the new CQ2 range and the old model is the totally redesigned body, which offers improved auto-switch mounting possibilities plus an overall reduction of cylinder weight of between 5 -13% depending on the model. Now, all CQ2 cylinders from \varnothing 32 to 200mm are designed with slide in grooves which can accommodate auto-switches on all four cylinder sides without the need for auto-switch brackets. And, for smaller bore sizes between \varnothing 12 and 25mm, slide in grooves have also been integrated in the new body design to accommodate bracket free auto-switches on two surfaces. Designed for use with our simple to set, dual colour, solid state auto-switches, the integrated auto-switch channel ensures total protection against potential accidental damage and improved health and safety benefits during both installation and maintenance procedures.



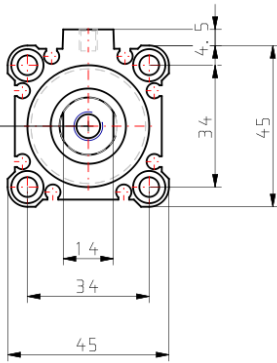
Double-acting, single-rod cylinder

Standard Specifications

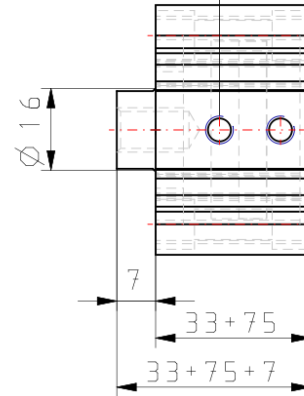
Magnet	Built-in
Mounting	Both Ends Tapped
Type	Standard
Bore Size	32mm
Port Thread Type	Rc: 32-100 Bore; M Thread 12 to 25 Bore
Lube-retainer	Without Stable Lubrication Function
Stroke	75 mm
Body Option	Rod End Male Thread
Auto Switch Groove	Auto Switch Mounting Grooves
Auto Switch	No Switch
Lead Wire or Prewired Connector	0.5m or None in the Case of No Switch
Number	2 pcs. or None in the Case of No Switch
Pressure medium	Compressed air
Maximum temperature of pressure medium	70 °C
Maximum temperature of pressure medium with magnet	60 °C
Minimum temperature of pressure medium	-10 °C [without condensation]
Minimum temperature of pressure medium with magnet	-10 °C [without condensation]
Maximal operating pressure	1.0 MPa
Minimum operating pressure	0,05 Mpa
Proof pressure	1.5 MPa
Maximum ambient temperature	70 °C
Maximum ambient temperature with magnet	60 °C
Minimum ambient temperature	-10 °C [without condensation]
Minimum ambient temperature with magnet	-10 °C [without condensation]
Conform to the European RoHS Directive	Not conform
Number of pneumatic connections	2 pcs.
Pneumatic input connection	Rc 1/8
Mode of operation of drive	Double acting
Theoretical cylinder force, advance stroke (at 0.5 MPa)	302 N
Theoretical cylinder force, return stroke (at 0.5 MPa)	402 N
Maximum piston speed	500 mm/s
Geometric form of the piston rod	Single rod
Malethread of rod end	M14 x 1.5
Femalethread of rod end	M8 x 1.25
Minimum piston speed	50 mm/s
Weight	0.590 kg

Dimensions

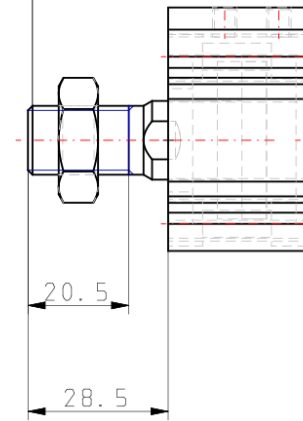
MB x 1.25 thread effective depth 13



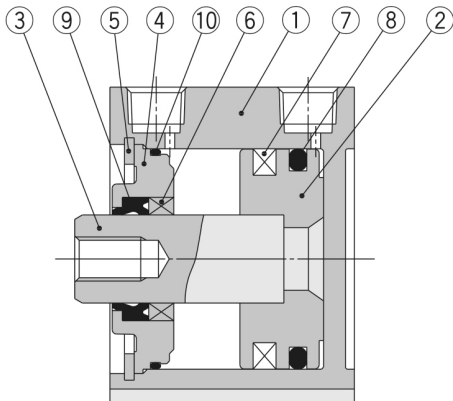
2x1 / 8 (Rc, NPT, G) (Port size)



M14 x 1.5



Constructions



Component Parts

No.	Description	Material	Note
1	Cylinder tube	Aluminum alloy	Hard anodised
2	Piston	Aluminum alloy	Chromated
3	Piston rod	Stainless steel	ø12 to ø25
		Carbon steel	ø32 to ø100, Hard chrome plated
4	Collar	Aluminum alloy	ø12 to ø40, Anodised
		Aluminum alloy casted	ø50 to ø100, Chromated, Painted
5	Retaining ring	Carbon tool steel	Phosphate coated
6	Bushing	Bearing alloy	For ø50 or more only
7	Magnet	—	
8	Piston seal	NBR	
9	Rod seal	NBR	
10	Gasket	NBR	

Additional information

Catalogue

[CQ2-Z-B_EU.pdf](#)